



MYLAB™ VET PRODUCT LINE

# MyLab™ X5VET **EXPERIENCE EFFICIENCY**

Quick responsiveness, advanced technology and easy to use interface maximize your diagnostic efficiency.

Zero-click technology helps save you time and advanced imaging quality helps you diagnose with confidence.



NEVER STOP ELEVATING YOUR VET EXPERIENCE.



# MyLabX5 VET



**Dedicated VET software and probes**



**Windows® 10**



**Full-screen visualization**



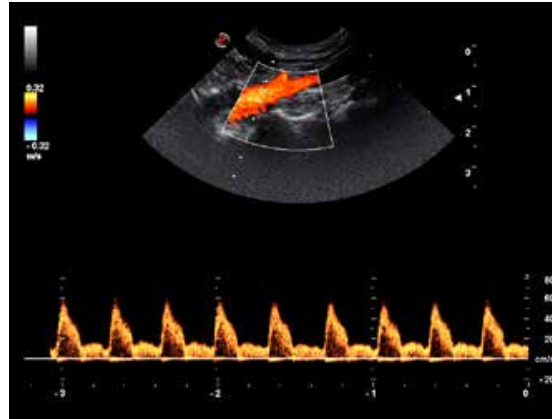
**Highly responsive capacitive touchscreen**



**Large probe portfolio**



**Diagnostic confidence**



Cat - Artery - PW



Dog - Small bowel - B-Mode

- **High-definition B-Mode:** new software and technology to enhance image quality and increase all diagnostic details
- **Single-probe approach:** with just one probe you can make a complete medical imaging examination and simplify your everyday practice
- **XStrain2D and AutoEF:** advanced, affordable cardiological tools which are one of a kind
- **Extensive connectivity:** advanced features allow sharing of ultrasound exams with others, even on tablets and portable devices
- **Booting time** less than 15 seconds

16000182MA Ver.01

Esaote S.p.A. - sole-shareholder company  
Via Enrico Meloni 77, 16152 Genova, ITALY, Tel. +39 010 6547 1, Fax +39 010 6547 275, info@esaote.com

Windows® is a registered trademark of Microsoft Corporation. MyLab is a trademark of Esaote spa.  
Technology and features are system/configuration dependent. Specifications subject to change without notice. Information might refer to products or modalities not yet approved in all countries.  
Product images are for illustrative purposes only. For further details, please contact your Esaote sales representative.

NEVER STOP ELEVATING YOUR VET EXPERIENCE.

